



From Buildings to Cities, Smarter is Better

Better Management, Efficiencies and
Experiences with **Zyter SmartSpaces™**



From the Internet of Things (IoT) to the Intelligence of Things

Zyter SmartSpaces enables you to better manage your ecosystem and unlock the full potential of your connected IoT devices so that you can:

- **Improve Operational Efficiencies** – Simplify and automate day-to-day management tasks to achieve long-term efficiency improvements and significant cost reduction.
- **Make Smarter, Faster Decisions** – Get actionable insights so you can make intelligent and informed decisions faster using real-time data streams, comprehensive dashboards, incident reports and prescriptive actions.
- **Provide Intuitive Experiences for Stakeholders** – Using our human-centered design methodology, Zyter SmartSpaces delivers an intuitive and seamless experience across a full range of apps and services – regardless of devices and data sources.
- **Improve Safety** – Identify and address potential issues quickly before they escalate using context-aware incident reporting, predictive analytics and contextual alerts.
- **Secure your Enterprise** – Ensure the highest levels of security at all times with the platform's 256-bit AES encryption along with built-in user identification and authorization.
- **Achieve Faster ROI** – Most organizations achieve return on investment within the first year of operation.

Whether it's a small campus, a mid-size enterprise or a large city, modern spaces are already using sensors and devices to monitor everything from lights and parking to air quality and waste management. Unfortunately, not all systems are integrated seamlessly, making it difficult to obtain a clear view of current events and conditions across the spectrum of solutions. What's more, despite access to mountains of reported data, extracting actionable intelligence and insights for more informed decision making still remains a challenge for stakeholders.

Fortunately, there's Zyter SmartSpaces™.

Trusted by Qualcomm® to be the foundation of its Smart Cities Accelerator Program, the Zyter SmartSpaces Platform breaks down silos – by integrating and consolidating data from IoT devices and applications you already have – into one seamless interface. The result: complete visibility of what is happening across your entire network of connected devices and sensors.

In addition to receiving instant alerts and notifications about issues that matter, you can drill down through the layers of data and focus on solving problems using analytics and historic trends. You'll be able to make informed and intelligent decisions that not only improve operational efficiencies, but also enhance the quality of life – for employees, workers, residents and citizens. As the platform learns and evolves, it becomes capable of taking decisions on its own, based on rules, policies and outcomes defined by stakeholders, eventually making the vision of self-managed spaces a reality.

***Zyter SmartSpaces Platform breaks down silos –
by integrating and consolidating data from IoT
devices and applications you already have – into one
seamless interface.***

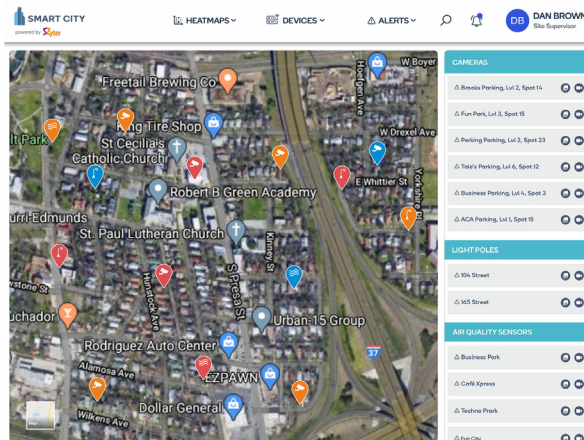
Turnkey Implementations Across Multiple Industries

Due to the flexibility and scalability of Zyter SmartSpaces, it can be used across multiple industries and for many diverse applications. Here are just a few examples:

• Command and Control Management System for Cities and Communities –

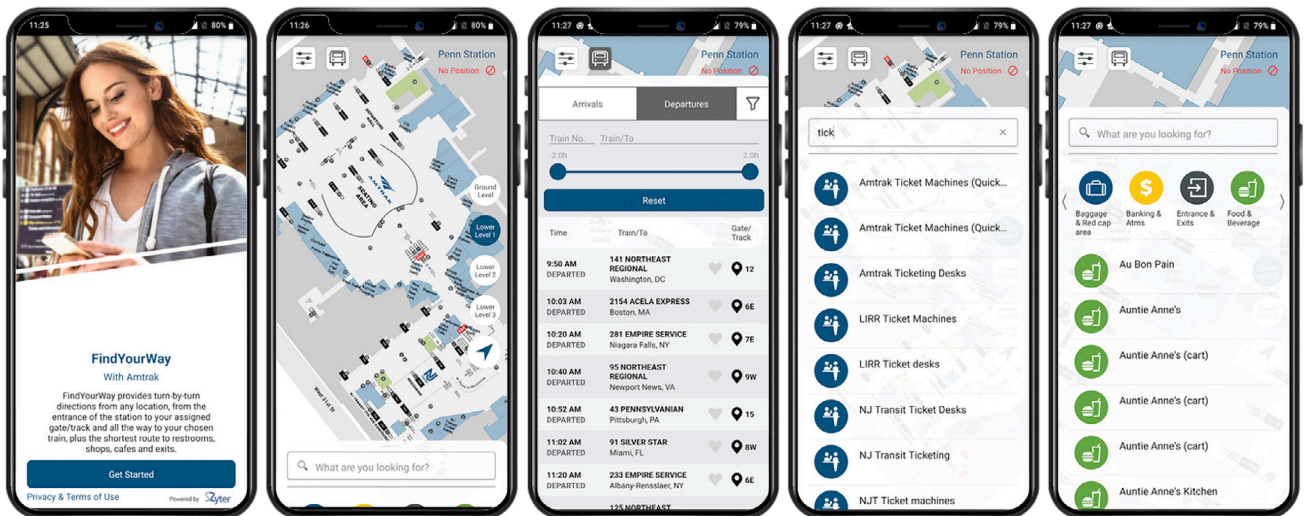
In partnership with Qualcomm Technologies and by leveraging its existing Smart Cities network, Zyter SmartSpaces is being deployed as a plug and play Smart City as a Service (SCaaS) solution. Solutions from multiple different device vendors are integrated into the

Zyter SmartSpaces ecosystem to provide end-to-end visibility and management across cameras, street lights, parking, building energy management, asset tracking, air quality sensors, waste management and more. This will enable cities and communities to unlock the management potential and efficiencies promised by the widespread deployment of IoT devices.



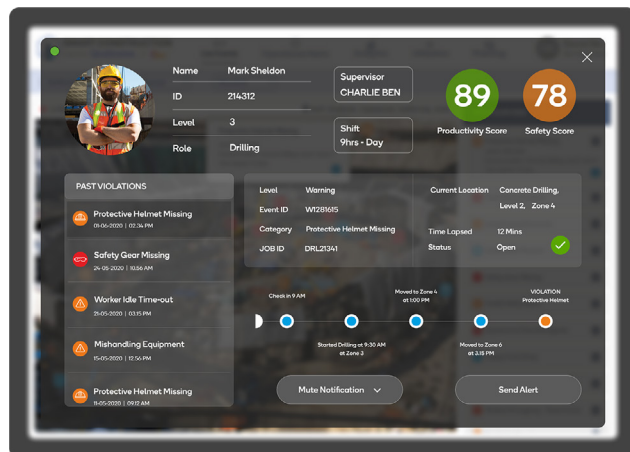
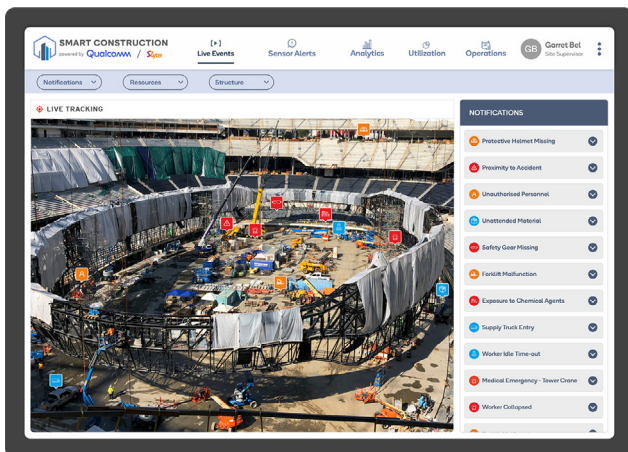
Zyter SmartSpaces is being deployed as a plug and play Smart City as a Service (SCaaS) solution.

- **Rapid Transit Stations** – Zyter SmartSpaces is deployed inside New York Penn Station where it is the foundation for FindYourWay, Amtrak's real-time customer information and indoor way-finding app. Once downloaded on an Android or iOS device, FindYourWay provides the platform, train, and boarding information for commuters. It also provides relevant directions and information on points of interest (POIs) within the station based on a user's precise location, including platforms, exits, ATMs, and restaurants. Additionally, the app also enables cross-sell and upsell opportunities for businesses in Penn Station through coupons and location based advertising.

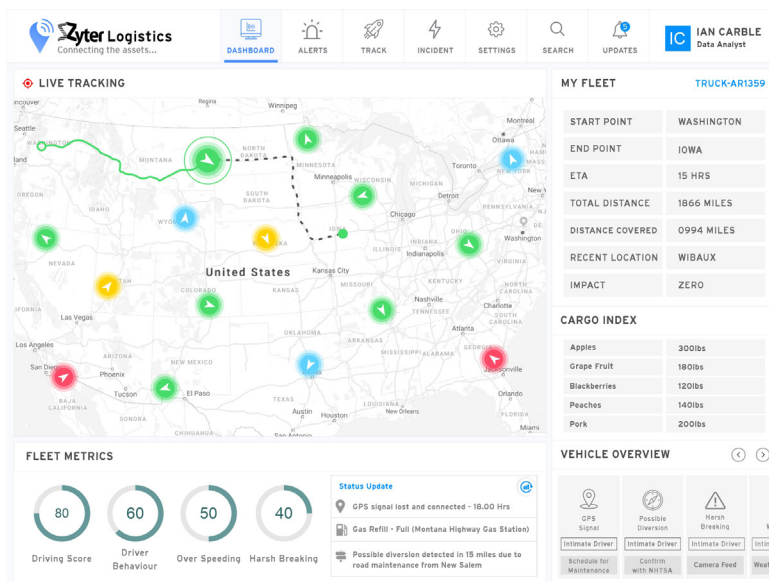


Managers can drill down and access worker productivity and safety scores and easily track resource utilization, equipment utilization, scheduling and budget.

- **Construction Management as a Service (CMaaS)** – Leveraging Qualcomm's 5G connectivity, the Zyter SmartSpaces Platform takes construction site productivity and safety to a new level. Using a continuous stream of real-time data from IoT devices on equipment and workers, it is possible to gain a seamless, up-to-the second view of what is happening on the construction site. Additionally, through state-of-the-art data visualization, analytics and intelligent insights, construction companies can easily monitor and address events, operational issues, and incidents. By increasing the efficiency of the construction process, the Zyter CMaaS solution saves considerable time and money for a minimal investment.



- **Zyter Logistics** – The Zyter platform can connect to any kind of device (OBD sensors, battery-powered trackers, mobile phones, and more) to monitor speed, braking, and other aspects of driver behavior. It can also utilize external data like road conditions, traffic conditions, weather, and more, to predict delivery times and delays, and issue alerts if necessary. Using these ecosystems of devices, along with the integration into inventory management, warehouse capacity, pricing and distribution center information, it is possible to provide intelligent recommendations on the best markets for goods, perishables and more, all based on AI and machine learning.





About Zyter

Zyter, founded in 2017 by serial entrepreneur Sanjay Govil, provides a cloud-based, 5G-ready platform that enables better outcomes in telehealth, home health, and remote patient monitoring, while also supporting IoT/smart technology and thermal imaging solutions. The platform's open architecture, military-grade security, and compliance with multiple industry standards enables organizations in healthcare, education, entertainment, government, and transportation to easily and effectively connect, communicate, collaborate and engage. In 2020, the company won more than 50 awards for its solutions including Best Health Care and Medical Innovation as well as Company Innovation of the Year (One Planet Awards, Silver). The privately-held company is based in Rockville, Md. For more information, please visit www.zyter.com.

For More Information

To learn more about Zyter's SmartSpaces Platform or arrange a product demonstration, please contact +1 (301) 355 7760, sales@zyter.com or visit www.zyter.com.

